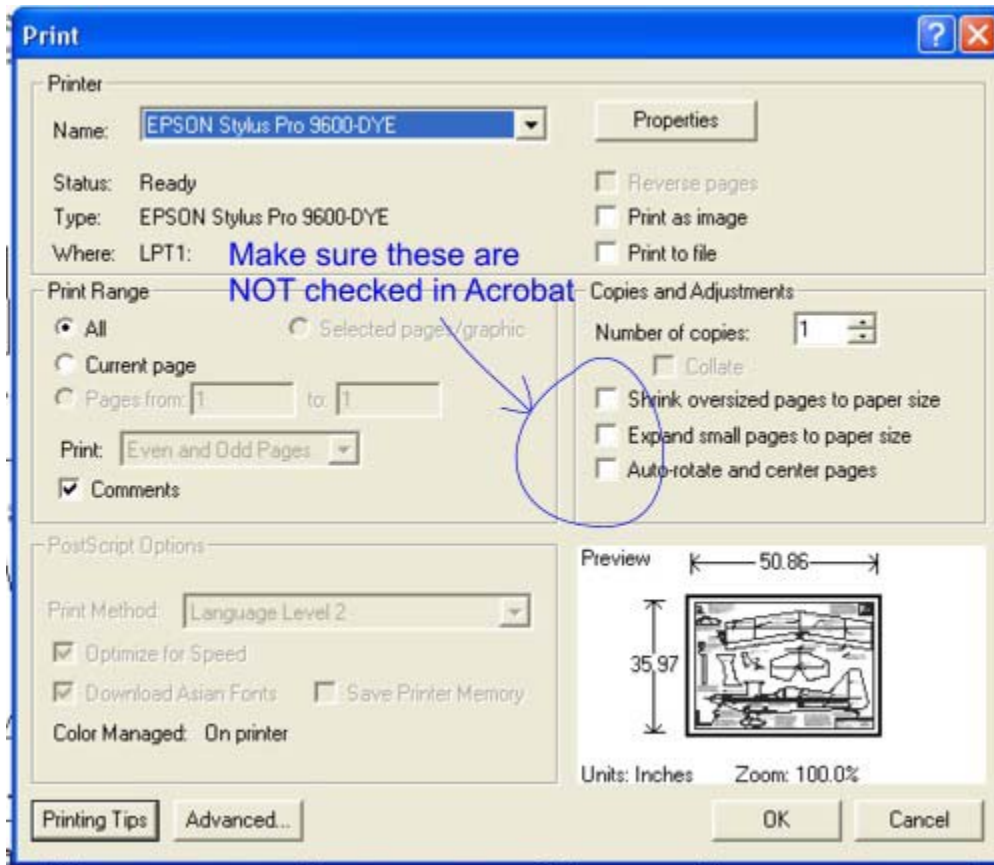


**ultimate40-fullsheet.pdf** - This pdf file is formatted to be printed on 36 inch wide paper. Put this file on a disk, then take it to your local Kinko's or printing center. Print the plans directly from the file on the disk.

**ultimate40inch-tiled.pdf** - This pdf file is the same plan, but it is formatted to be printed on 36 tiled 8.5x11 inch sheets. Make sure when taping the plans together, you line up the crop marks, not the edges of the paper.

Make sure when printing that the "fit to page" or "center on page" checkbox is NOT checked in the print properties box for the printer. Make sure you tell the clerk at the print shop the above info.



Once the plans are printed, be sure to check the inch scale on the bottom left side of the plans. Not all printers handle files the same. Try to get the inch scale as close as possible. I took the files to my local Kinko's printing center and the plans came out exact.

If you have any questions, feel free to email me at [tim@jetworksmodels.com](mailto:tim@jetworksmodels.com)

Have fun and send some pictures of your completed model!

Cheers,

Tim Hart

[tim@jetworksmodels.com](mailto:tim@jetworksmodels.com)

[www.jetworksmodels.com](http://www.jetworksmodels.com)